

Public Document Pack

Tony Kershaw
Director of Law and Assurance

If calling please ask for:

Erica Keegan on 033 022 26050
Email: erica.keegan@westsussex.gov.uk

www.westsussex.gov.uk

County Hall
Chichester
West Sussex
PO19 1RQ
Switchboard
Tel no (01243) 777100



03 November 2022

Dear Member,

West Sussex Health and Wellbeing Board - Thursday, 3 November 2022

Please find enclosed the following document that was considered at the meeting of the West Sussex Health and Wellbeing Board on Thursday, 3 November 2022 which was unavailable when the agenda was published.

Agenda No	Item
------------------	-------------

9.	Integrated Care System (Pages 3 - 16)
-----------	--

Yours sincerely

Tony Kershaw
Director of Law and Assurance

To all members of the West Sussex Health and Wellbeing Board

This page is intentionally left blank

Integrated Care System Update

West Sussex Health and Wellbeing Board
November 2022

Agenda Item 9

Better health and care for all

ICS Update

- Short debrief from the Health and Wellbeing Board Seminar in October
- Update on the development of the Integrated Care Partnership Strategy

HWB October Seminar

- Q1 How do we want ensure the right representation across the partnership?
- Q2 How do we ensure Local Community Networks/neighbourhoods (LCNs) are involved?
- Q3 How do we work collaboratively between the West Sussex Health and Wellbeing Board and the West Sussex Health and Care Partnership Executive to deliver priorities, and avoid duplication?

Early Themes

- Looking at the current landscape including the more recently formed groups, we probably don't need a further group to be formed (e.g. partnership forum), and we should make the focus our **way of working**
- What is likely is that we need to **review the membership of these existing groups**, including HWB, to ensure the model of representation reflects the stakeholder landscape and scale

Page 6

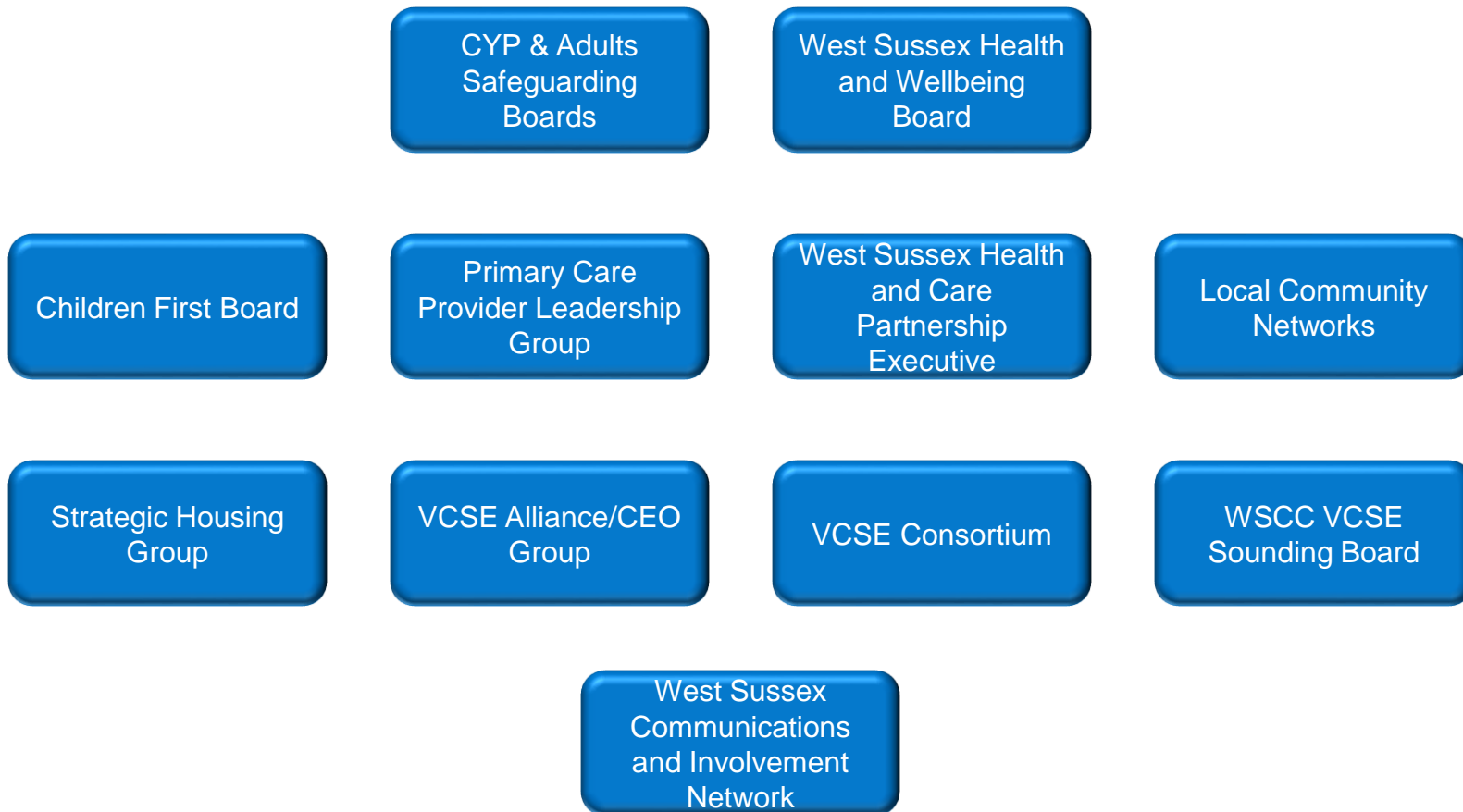
LCNs need a stronger relationship with the West Sussex Health and Care Partnership and we need to start defining their future in terms of responsibility (distinct from integrated neighbourhood teams). This may have a resource implication.

- LCNs probably do need to come together at a place level occasionally, but perhaps through **periodic seminars** rather than as an additional meeting.
- There is a likely need for a place-based leadership group to deliver the **population health and health inequalities priority work** on behalf of the HWB/Partnership

Next Steps

- More specific themes from the seminar to digest – further updates to come
 - Undertake a mapping exercise to review the representation and relationships within our core partnership groups – see next slide
- Explore the opportunity to develop a place-based leadership group to oversee the delivery of population health and health inequality transformation projects on behalf of the HWB and the Partnership

Our Key Partnership Groups for relationship and representation mapping



Integrated Partnership Strategy: Progress Update

The Sussex Integrated Care Strategy

- Our aim is to achieve better health and care for all across Sussex. We want everyone to live longer, healthier, and fulfilling lives and have access to the best possible services and support when they need them.
- We are developing an 'Integrated Care Strategy' that will set out the ambitions that we believe will bring the biggest benefit and positive change for our populations through all partners working collectively together.

How We Are Developing Our Strategy

- The [Sussex Health and Care Assembly](#) has been established to oversee the development of the strategy and its impact.
- The Assembly is a new statutory joint committee between the NHS and Local Authorities in Sussex and is made up of a wide range of leaders from the NHS, local authorities, universities, voluntary and community organisations, Healthwatch and other specialist members with expertise in further education, housing and local enterprise.
- The strategy will be developed over the coming months and is due to be agreed by December 2022. We will then be working with our communities and partners in 2023 to make sure it is brought to life in the best possible way.

Our Principles of Co-designing an Integrated Care Strategy

These principles have been agreed across the system to inform the strategy development process:-

- a) **Place and population first:** We have agreed that we will take an approach that considers the principles of place-based working that have been agreed across the system.
- b) **Data and evidence:** we will ensure that our approach is based on evidence, comparative data and responds to population need in line with the above principles.
- c) **Co-production:** Our communities will be central to the creation of the plan. To achieve this, we will ensure that every organisation is actively involved and leading the engagement with our communities.
- d) **NHS plan:** there will be a requirement for the yearly national mandate to be responded to, but we will add national guidance to our strategy and ensure the guidance does not drive the framing of the document.
- e) We should frame the strategic priorities to be clear about the **most appropriate delivery geography** that will achieve impact – whether that be neighbourhood, place or pan-Sussex.
- f) We need to be clear that there are some clear strategic choices that have to be made; **we cannot do everything** and there needs to be an honest recognition of this reality.

Key Emerging Priorities for Sussex

- Long-term sustainable workforce for our local services, working with local education partners to grow our future workforce at a grass-roots level, offering attractive employment opportunities for our communities
- Maximise use of technology to improve health and care outcomes and deliver a more personalised experience
- Build on existing good practice to develop integrated neighbourhood teams to deliver care, working along with LCNs to provide a holistic approach to health and healthcare for individuals

West Sussex

- The importance of Places and the work that places do will inform key parts of the strategy
- The priorities in West Sussex are well-represented, taking the main themes from the West Sussex Joint Health and Wellbeing Strategy, as approved by the Health and Wellbeing Board, and the West Sussex Place-based Health and Care Plan.

Next Steps

- With the oversight of the Sussex Health and Care Assembly, the draft strategy is now being written up, following a period of co-production and suggestions for content.
- Much of this will be about what we have already committed to and agreed as our priorities, but now capitalising on the opportunities created by being part of an Integrated Care System
- A draft of the strategy is expected to be circulated to the HWB virtually during November, for comments and support.
- The HWB chair will collate feedback and confirm to the Leader of the Council that the HWB supports the strategy and formal approval may then be given before the final strategy is presented to the Assembly in December for sign off.

More Information on the Developing Strategy

Further information and updates on our developing strategy can be found on the Sussex Health and Care Partnership website:

[Developing the Sussex Integrated Care Strategy - Sussex Health and Care \(ics.nhs.uk\)](https://www.ics.nhs.uk/developing-the-sussex-integrated-care-strategy)

Find out about the many ways you can get involved in shaping the future of health and care in Sussex here:

[Shaping better health and care - Sussex Health and Care \(ics.nhs.uk\)](https://www.ics.nhs.uk/shaping-better-health-and-care)